

# UNSHIELDED SMD POWER INDUCTORS / FPI TYPE

## FEATURES

- ◆ Silver Plated Type
- ◆ High power and high saturation
- ◆ Ideal inductors for DC/DC conversion



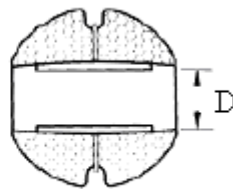
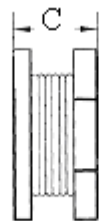
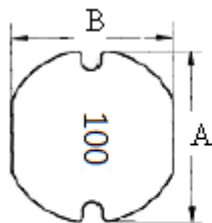
## APPLICATIONS

- ◆ Power supply for VTRs.
- ◆ Portable communication equipment.
- ◆ Notebook PCs.
- ◆ LCD televisions.
- ◆ DC/DC converters, etc.

## ORDERING CODE



## DIMENSIONS (UNIT: mm)



A	$3.3 \pm 0.3$	m/m
B	$3.0 \pm 0.3$	m/m
C	$1.1 \pm 0.3$	m/m
D	1.0 (REF)	m/m

CORE MASTER ENTERPRISE CO., LTD.

<http://www.coremaster.com.tw>



## UNSHIELDED SMD POWER INDUCTORS / FPI TYPE

### ELECTRICAL CHARACTERISTICS FOR FPI0311

Part No.	Inductance (uH)	RDC ( $\Omega$ )	IDC (A)
FPI0311-1R0 □	1.0	0.060	2.00
FPI0311-2R2 □	2.2	0.130	1.70
FPI0311-2R7 □	2.7	0.150	1.35
FPI0311-3R3 □	3.3	0.170	1.25
FPI0311-4R7 □	4.7	0.300	1.20
FPI0311-6R8 □	6.8	0.420	1.00
FPI0311-100 □	10	0.800	0.82
FPI0311-220 □	22	1.500	0.60
FPI0311-330 □	33	1.550	0.45

\* 100uH 以上 Test Frequency : 1KHZ/1V

\* 100uH 以下 Test Frequency : 2.52MHZ/1V